



**ORIGINAL**  
**15 ONE PARTS™**



**PERFECT FIT. VIN to VIN MATCHING. CERTIFIED ORIGINAL™.**

**ELECTRICAL**

**MECHANICAL**

**SUSPENSION**

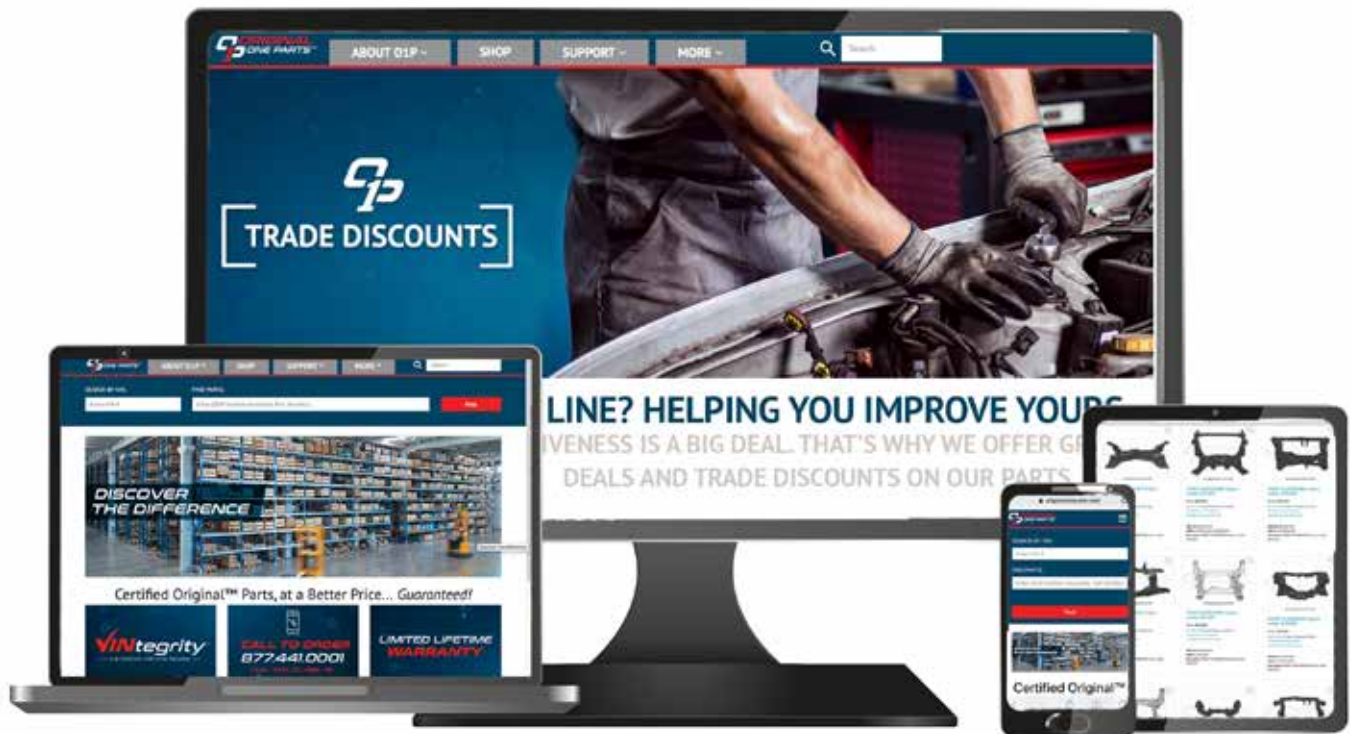
**ABSORPTION**

**APPEARANCE**

# SHOP ORIGINAL ONE PARTS

## Browse Our Live Inventory!

If you see a part online or on any platform that means it's on the shelf and ready to ship!



## [WWW.ORIGINALONEPARTS.COM](http://WWW.ORIGINALONEPARTS.COM)

Search by VIN, OEM Number, Keywords or by Year, Make and Model!

### ADD ORIGINAL ONE PARTS AS A PREFERRED VENDOR:

See the following pages for how to add Original One Parts as a preferred vendor on CCC One, Parts Trader, Mitchell and APU (*if you find O1P on APU that means your insurance carrier has already approved our parts!*)

***Stay tuned, we will be live with OPS Trax soon!***



[www.originaloneparts.com](http://www.originaloneparts.com)

# CCC ONE STEP 1-2

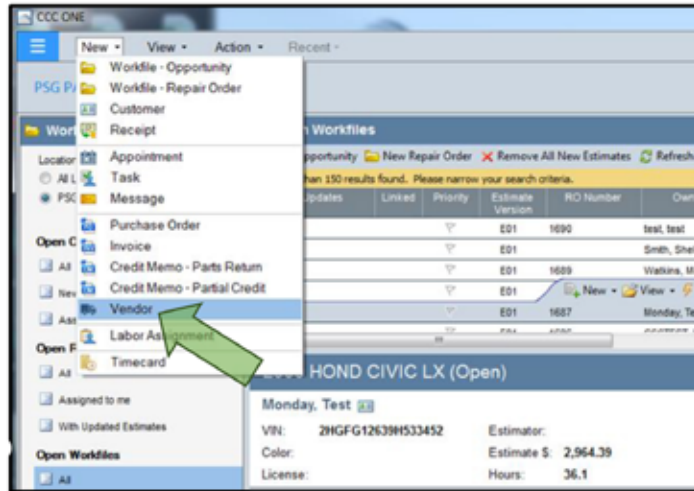


## Setup Job Aid: Add Original One Auto Parts Profile to CCC ONE®

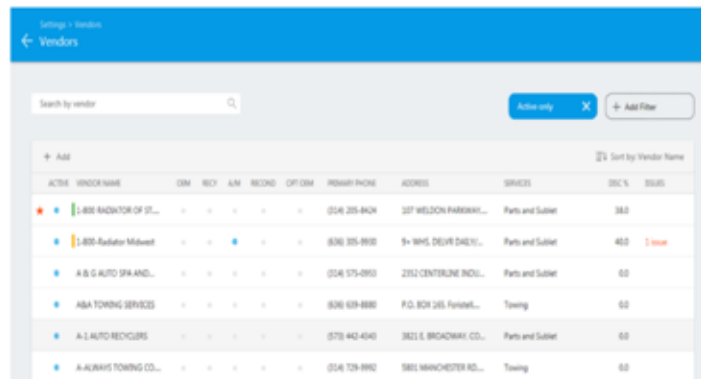
**Purpose:** This Job Aid demonstrates how to add the Original One Auto Parts profile not currently found in your CCC ONE Vendor List.

**Procedure:** Use the following steps to add the profile.

| Step | Action   |
|------|--|
| 1    | Go to the <b>New</b> menu and select <b>Vendor</b> . The New Vendor screen displays. |



| Step | Action   |
|------|--|
| 2    | To add a vendor, select the "+add" tab on the left side of the screen above the vendor list. |



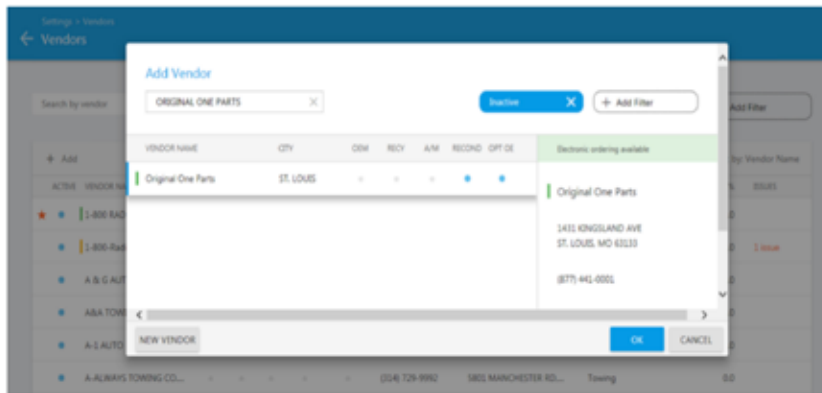
# CCC ONE STEP 3-4



## Setup Job Aid: Add Original One Auto Parts Profile to CCC ONE® (Continued)

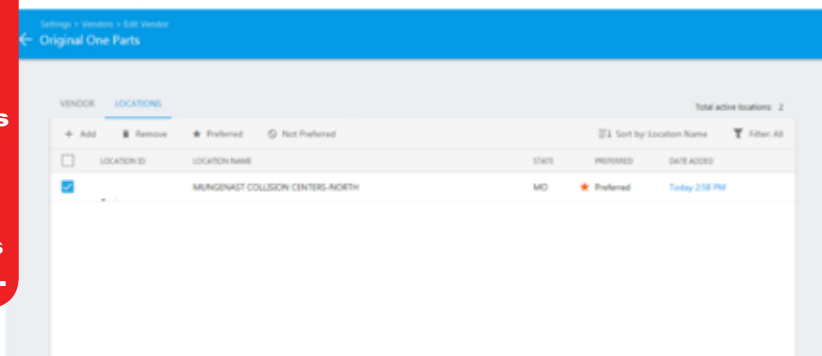
**Procedure:**  
(Continued)

| Step | Action  |
|------|---|
| 3    | In the "Add Vendor" window, type in Original One Parts and click enter. Then select Original One Parts in the list below and click on the "OK" in the bottom right. |



| Step | Action   |
|------|--|
| 4    | Select the location(s) that the vendor will be added to the vendor list. |

**This must be zip code of Original One Parts 63133 to properly populate our parts available.**



# CCC ONE STEP 5



## Setup Job Aid: Add Original One Auto Parts Profile to CCC ONE® (Continued)

### Procedure: (Continued)

| Step | Action  |
|------|---|
| 5    | Select on the "Vendor" on the top left and then click "Save" on the bottom right to save as a vendor. |

Settings > Vendors > Edit Vendor  
Original One Parts

VENDOR LOCATIONS

GENERAL

Phone Name\*  
Original One Parts

Phone Number\*  
(877) 441-0001

Phone Type  
Business

Original One Parts  
1411 KINGSLAND AVE  
ST. LOUIS, MO 63113

Alternate Phone

Phone Type

Fax

SAVE CANCEL



# CCC ONE VENDOR



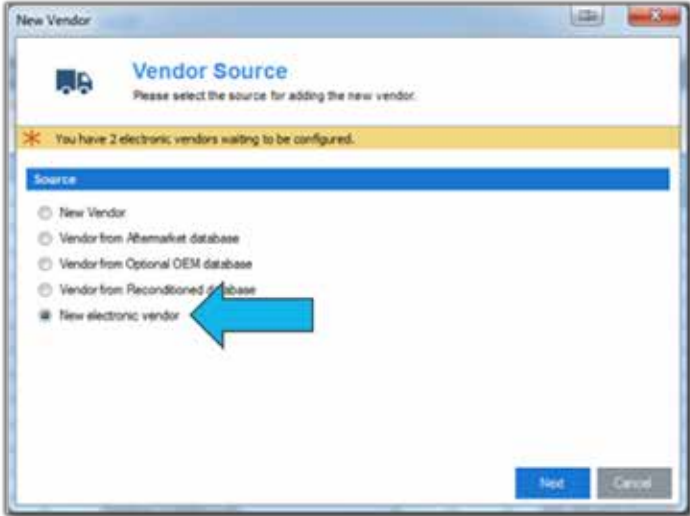
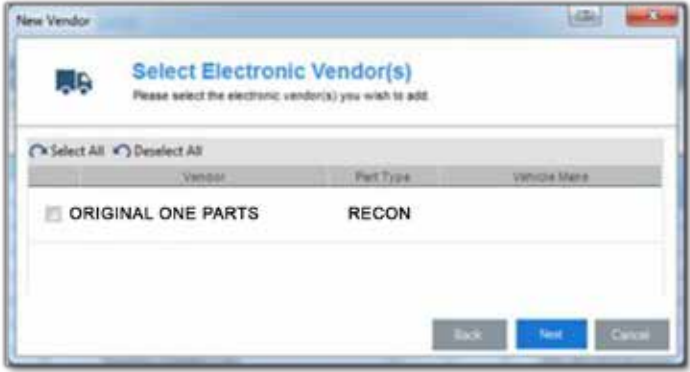

## CCC ONE: Adding New Electronic Vendor

### Introduction

Will provide instruction to add new electronic vendors in CCC ONE.

### Adding New Electronic Vendor

To add new electronic vendor in CCC ONE, follow the steps below:

| Step | Action   |
|------|--|
| 1    | <p>In CCC ONE, go to the <b>New</b> menu and select <b>Vendor</b>. New Vendor screen displays stating electronic vendors are waiting for configuration. Choose <b>New Electronic Vendor</b> and click <b>Next</b>.</p>  |
| 2    | <p>Select vendor(s) to add and click <b>Next</b>.</p>    |
| 3    | <p>Verify information and click <b>Finish</b> to complete adding vendor.</p>   |

